

LINDY®

CONNECTION PERFECTION

HDMI & VGA Wireless Projector Server

User Manual

English

LINDY No. 32701



www.LINDY.com

Manual

English

Introduction

Thank you for choosing the LINDY HDMI & VGA Wireless Projector Server. This product quickly turns your existing wired projector into a high-end wireless projector.

A split screen multicasting feature allows up to four users to use a single projector at once, with multiple users simultaneously logged onto the server; perfect for meetings and presentations. Users simply need to enable their WiFi and connect to the Wireless Projector Server using the Wireless Projector Server Utility to start begin projecting.

These features save you time swapping cables between computers or loading storage media onto a separate computer helping make your projector part of an easier, simpler and more professional presentation system.

Package Contents

- LINDY Wireless Projector Server
- Multi-country 5V 2.5A PSU (UK, Europe, USA, Australia, China)
- 2x Wireless dipole Antenna with SMA connectors
- 4 Pozidrive, 2 slot screws & wall mounting bracket
- USB memory stick
- Software CD includes:
 - Software for Windows & Mac OS
 - VAC.exe (for audio projection)
 - VDD.exe (for virtual extended display)
 - PtG Converter (for converting PowerPoint files for use with MobiShow)
 - SNMP Manager (for Wireless Projector Server device management)
- This Manual

Features

- Supports Windows 2000, XP, Vista & Windows 7, 8, Mac OSX 10.5 and later
- 4-to-1 split screen projection - connect four computers to one projector
- 1-to-4 screen projection - connect one computer to four Wireless Projector Servers
- Conference Control - allows moderators to control access to projectors
- Session security login IEEE standard 64/128 bit WEP, WPA, WPA2 key & Gatekeeper
- High Performance screen projection with audio & multimedia playback.
- Supports HD video streaming
- Supports OSD (On-Screen Display) image uploading
- Supports SNMP (Simple Network Management Protocol) device management
- Supports AP (Access Point) Client Mode
- Compatible with MobiShow - make presentations from your Smartphone

Specification

- Standards - IEEE 802.11b/g/n (2.4 GHz), 802.3/3u (10BASE-T/100BASE-TX)
- IP Address Configuration – Automatic & Manual DHCP
- Channels - 11 US/Canada , 13 Europe , 14 Japan
- Wireless Encryption/Key - IEEE standard 64/128bit WEP/WPA/WPA2-PSK
- Operating Frequency - 2.4 GHz 300Mbps LAN 10/100Mbps
- Wireless Range (Maximum) - 100m (300ft)*
- Maximum Output Resolution – VGA:1440x900, 32 bit color depth, HDMI: 720p (HD Ready)
- Dimensions 13.9 x 10.8 x 3.7 cm (WxDxH) / Weight - 0.5 kg

* The actual operational distances depends on the surrounding environment

Installation

Important

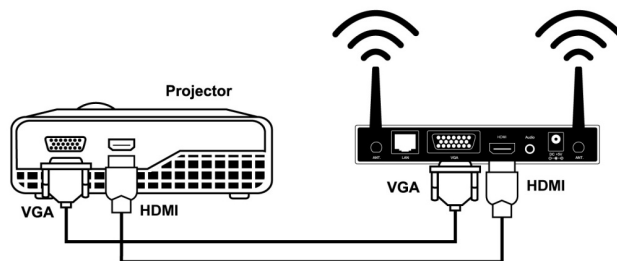
BEFORE STARTING AN INSTALLATION ENSURE ALL DEVICES ARE POWERED OFF

The Wireless Projector Server is capable of receiving separate audio & video signals up to 100m from a transmission source. Actual operational distances depend on the construction of the surrounding building and any walls or floors that are situated between the transmitting computer and the Wireless Projector Servers receiving antenna.

Quick Setup

These steps follow an installation using HDMI or VGA equipment with Windows 7

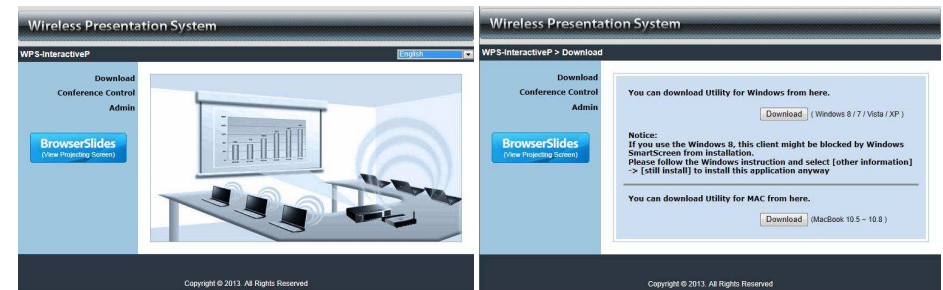
1. Connect the Wireless Projector Server to a projector with a VGA or HDMI cable. Power up the projector



2. Power on the Wireless Projector Server. The Power LED will turn from Red to Green and the projector screen will show the default menu screen as below. The Wireless Projector Server is now ready to use



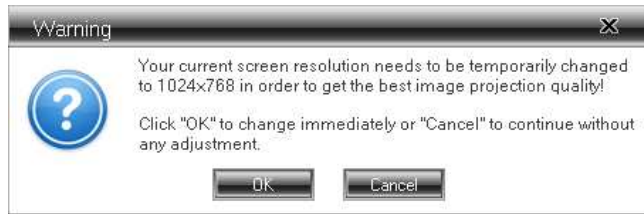
3. Enable your computers WiFi and connect your computer to the Wireless Projector Server WLAN via Windows Control Panel > Network Settings
4. Open your preferred web browser. If you use WiFi to connect to the internet this should redirect automatically to the Wireless Projector Server Management page. If not enter the default IP address of the Wireless Projector Server 192.168.100.10 or refer to the IP address shown in the bottom left corner of the projector screen



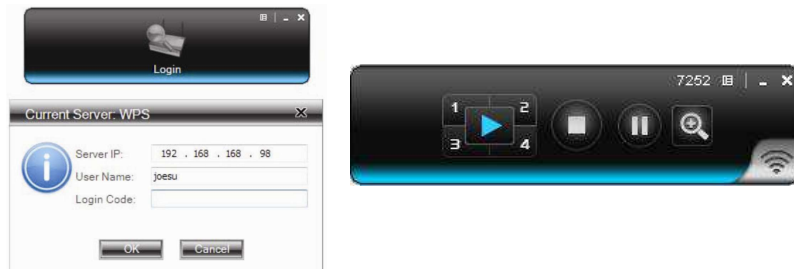
5. Unless you already installed the OS utility from the software disc, download the required OS Utility for your Computers OS and follow its Installation Wizard. Ensure your firewall allows the Wireless Projector Server software to pass through. After installation you will see the Wireless Projector Server shortcut on your desktop



- Run the Wireless Projector Server Utility, the following Warning message will be displayed



- Select *Cancel* to continue without adjusting your system settings. You can make adjustments to display settings later via Windows Control Panel > Display
- Select the Wireless Projector Server you require - identified by the IP Address shown on the projector screen
- Enter the Login Code is shown in the top left of the projector screen
- The Wireless Projector Server user Interface will open



- Click the *Play* button to start a mirrored projection of your current desktop or active program
- Select the different split screen quadrants by clicking the 1/2/3/4 buttons around the *Play* button
- Select & login to multiple Wireless Projector Servers in the *Device List* to project to up to four different projectors at once – multicasting
- Click the *Stop* button to stop a presentation and return to the default menu screen
- Click the *Pause* button to hold a presentation on its current frame. Any Changes on your desktop screen will not show on the projector screen until you click the *Pause* button again

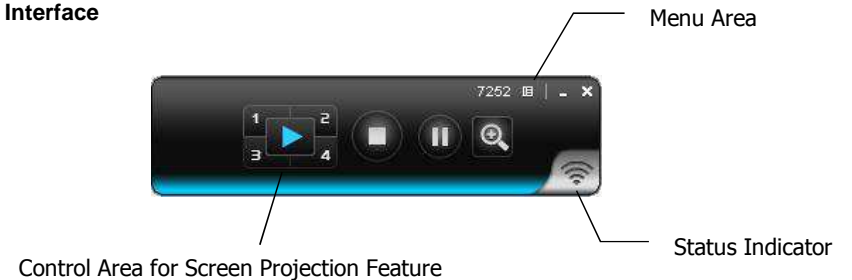
- Closing the Wireless Projector Server Utility will return the projector screen to the default menu screen











Using the Windows Client Utility

- Install all the software & drivers included on the software disc and turn on your WLAN
- Click on the *Wireless Projector Server* desktop icon. The Utility will automatically search for the Wireless Projector Server. When the Wireless Projector Server is found a Login dialog will appear
- Enter the four digit Login Code is shown in the upper left corner of the projector screen

User Interface



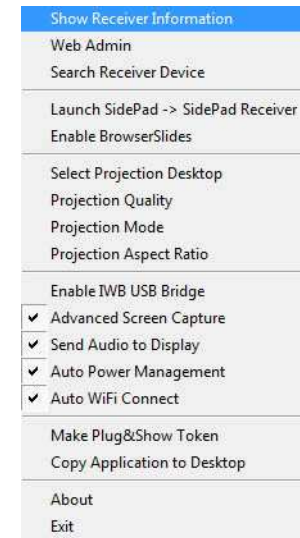
Button	Description
	Full Screen projection
	Project to Split #1
	Project to Split #2
	Project to Split #3
	Project to Split #4
	Stop projecting
	Pause projecting
	Enable the Windows Magnifier function

Show Login Code

Clicking the four digit code icon in the upper-right corner of the user Interface will display a Login Code in the upper-left corner of your desktop. This display will close automatically after 10 seconds. Clicking anywhere on the desktop during this time will cancel this display

Utility Menu

Clicking the Utility Menu icon in the top right of the user Interface will open the Utility Menu Drop Down



Show Receiver Information - displays the Login Code in the same way as clicking the four digit code in the user Interface

Web Admin - opens the *Web Admin Management Page*, described later

Search Server - refreshes the Wireless Projector Server list

Projection Quality - gives options to choose between *Normal* for a faster projection speed with lower image quality or *Best* for clearer screen image quality, but slower projection speed

Projection Source - after installing the *VDD.exe* driver, you can select to project a Virtual Extended Screen across up to four Wireless Projector Servers. Use Windows Control Panel > Display to make changes to your Display settings, screen setup and arrangement

Send Audio to Display - after installing the *VAC.exe* driver you can choose to playback audio through the Wireless Projector Server's 3.5mm audio output. For best results it is recommended that audio is played back via the audio output otherwise there will be noticeable sync issues with the video

Auto WiFi Connect - automatically connects to a previously used Wireless Projector Server

Auto Power Management - changes your computer's power management scheme to the highest performance for making presentations. Selecting this option enables or disables these settings and immediately restores your previous power scheme settings.

Hide UI - hides or displays the user Interface on the projection screen

Advanced Screen Capture - see tip windows and other layered windows, including the main UI on the connected display. In this mode the mouse cursor may blink from time-to-time on the projector screen - for the best results it is recommended this feature is disabled

Repeat - plays back the current audio / video file

Make Plug&Show Token - opens the Plug & Show Token wizard, described later

Copy Application to desktop - copies the application to your desktop

About - shows system information including product model name, client version, IP address and additional information

Exit - stops the current presentation and closes the application immediately

Web Admin Management

1. Connect to the Wireless Projector Server via WLAN and open your preferred web browser



2. Clicking the *Web Admin* option should automatically open to the Wireless Projector Server Web Admin Management Page. If not, enter the IP address shown on the projection screen in your web browser. The default IP address is 192.168.100.10

The Web Admin Management Page consists of three sections;

- Download
- Conference Control
- Admin

Download

Selecting the *Download* option opens the download dialogue



From here you can download and run Windows or Mac versions of the Wireless Projector Server Utility installation program. Select the relevant program for your Operating System and follow the Installation Wizard

Once the installation is complete, a shortcut icon for the Wireless Projector Server will appear on your desktop



Conference Control









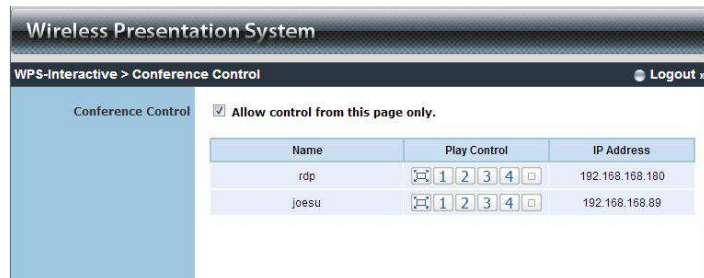
This function allows you to host multiple presentations without swapping connection cables between computers. Up to 4 users can project at once, with multiple users logged in. The default *User Name* and *Password* are **moderator**.

After login you will see three columns user List. This shows the current status information of all the users connected to the Wireless Projector Server:

- Computer Name
- Play Control
- IP Address

In the *Play Control* column six buttons indicate & control each user's status on the projection screen;

- Play Full screen 
- Play on Split #1 
- Play on Split #2 
- Play on Split #3 
- Play on Split #4 
- Stop Presentation 



Admin

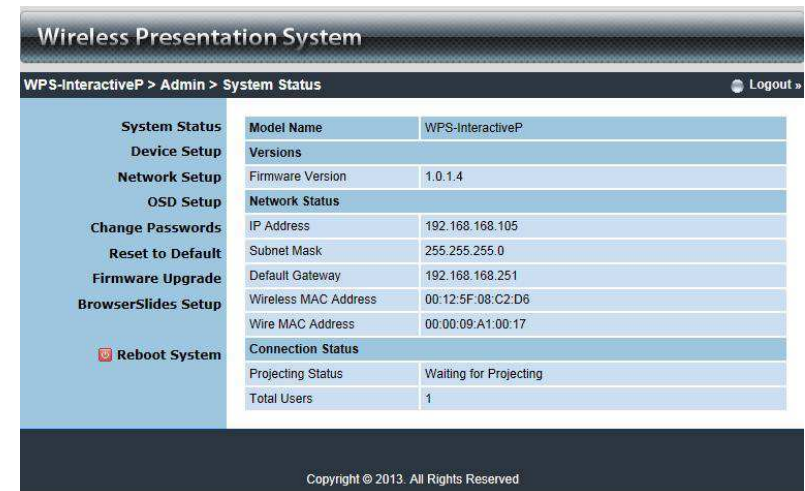
This section allows you to view and set various settings for the Wireless Projector Server



The default *User Name* and *Password* are **admin**.

After login you will see several options;

- System Status
- Network Setup
- OSD Setup
- Projection Setup
- Change Passwords
- Reset to Default
- Firmware Upgrade
- Reboot System



System Status

This section shows information on the current system status; *Model Name*, *Firmware Version*, *IP Address*, *Subnet Mask*, *Default Gateway*, *Wireless Mac Address*, *Wire Mac Address*, *Projecting Status* and *Total users*.

Wireless Presentation System

WPS-Interactive > Admin > Network Setup Logout »

System Status
Device Setup
Network Setup
OSD Setup
Change Passwords
Reset to Default
Firmware Upgrade
BrowserSlides Setup
■ **Reboot System**

IP Setup

Obtain an IP address automatically Use the following IP address

IP Address: 192 . 168 . 100 . 10
 Subnet Mask: 255 . 255 . 255 . 0
 Default Gateway: 192 . 168 . 100 . 10
 DNS Server: 192 . 168 . 100 . 10

DHCP Server Setup

Auto Disable

Start IP: 192 . 168 . 100 . 11
 End IP: 192 . 168 . 100 . 254
 Subnet Mask: 255 . 255 . 255 . 0
 Default Gateway: 192 . 168 . 100 . 10
 DNS Server: 192 . 168 . 100 . 10

Wireless Setup

Wireless LAN: Enable Disable
 Embedded AP SSID/ NAME: WPS
 Region: WORLDWIDE
 SSID Broadcast: Enable Disable
 Channel: Auto
 Encryption: Disable
 Key:
 Hide characters
 Channel Bandwidth: 20MHz Auto

Ap Client

Connect to Existing AP: Existing AP SSID:
 Enable Disable
 Scan:
 Encryption: Disable
 Key:
 Hide characters

GateKeeper: All Pass All Block Internet Only

SNMP: Enable Disable

Copyright © 2012. All Rights Reserved

Network Setup

The default setting of the Wireless Projector Server is DHCP Auto (Dynamic Host Configuration Protocol). When the Wireless Projector Server is connected to a LAN that already has a DHCP server, the Wireless Projector Server will take an IP address assigned to it by that server. When the Wireless Projector Server is connected to a LAN that does not have a DHCP server, the Wireless Projector Server becomes the DHCP server in that network.

If you do not require the DHCP function it is recommended to select **Disable**

IP Setup:

- Select *Obtain IP address automatically* or *Use the following IP address*
- IP Address - the default value is 192.168.100.10
- Subnet Mask - the default value is 255.255.255.0
- Default Gateway - the default value is 192.168.100.10
- DNS Server - the default value is 192.168.100.10

DHCP Server Setup:

- Select *Auto/Disable Enable*
- Start IP - the start IP address of the DHCP Server
- End IP - the end IP address of the DHCP Server
- Subnet Mask - the default value is 255.255.255.0
- Default Gateway - the default value is 192.168.100.10
- DNS Server - the default value is 192.168.100.10

Wireless Setup:

- Wireless LAN - the default value is *Enable*
- Connect to Existing AP - input the SSID of the Wi-Fi AP you want to connect to
- Region - the default value is *Worldwide*
- SSID - SSID string, max. Length is 32 bytes
- SSID Broadcast - the default value is *Enable*
- Channel - use this to set *Fixed Channel* or *Auto*. In Auto the Wireless Projector Server will scan all available wireless channels and select one automatically when powered on
- Encryption - select *Disable* or set WEP/WPA/WPA2 in 64 or 128bit with an ASCII or HEX string
- Key - if Encryption is enabled, you will have to set the key value here according to the encryption mode selected

Gatekeeper:

Gatekeeper is designed for maintaining enterprise network security within the Wireless Projector Server

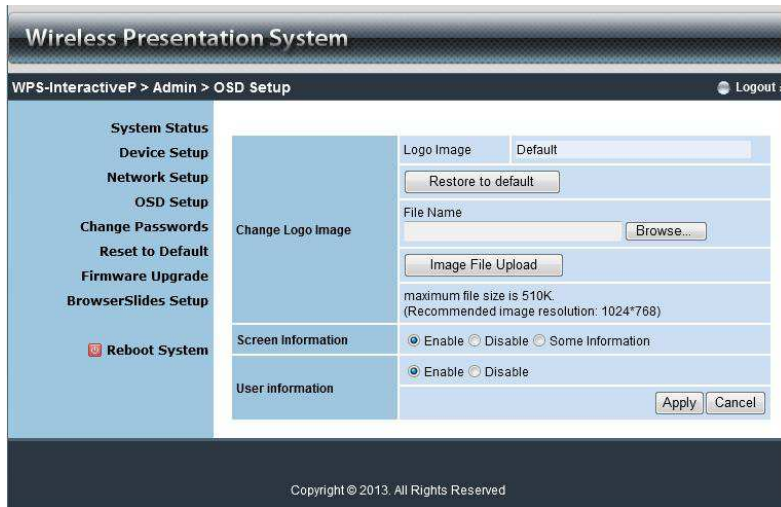
- All Pass - allows Guest users to access all office networks and Internet connections
- All Block - blocks Guest users to access all office networks (LAN)
- Internet Only - blocks Guest users from office networks (LAN) but still reserves Internet connection capability, if available

Apply - applies any changes made to these settings

Cancel - cancels any changes made to these settings

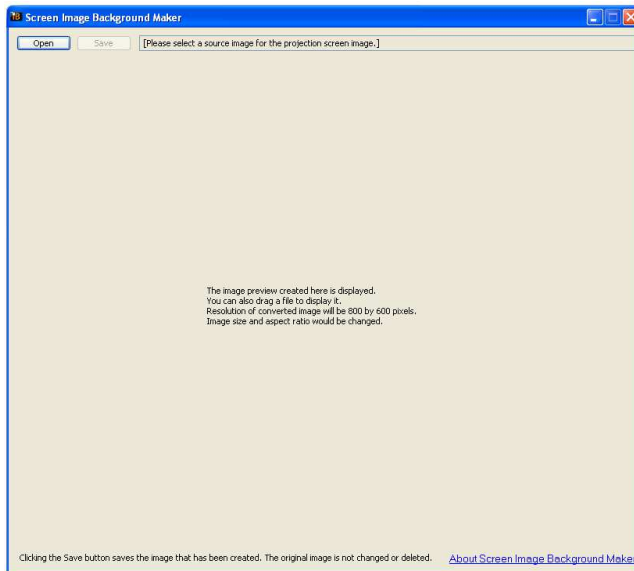
OSD Setup

This section allows you to change or restore the default projector screen background. You can also set what information is displayed on the projector screen



To use a different image as a background it first needs to be converted into a .ib image using the *IB Maker utility* from the software disc. This can then be uploaded to the Wireless Projector Server by Browsing to the new .ib images location and clicking *Image File Upload*

To use the *IB Maker* click the desktop icon and follow the on screen instructions. Images to be converted should be 800 x 600px and saved as a .jpg or bitmap images first



Projection Setup



This section gives you options to adjust the visual qualities of the your projection

- Resolution – VGA: 1440 x 900, XGA (1024 x 768), WXGA(1280 x 768, 1280 x 800) and SVGA(800 x 600); HDMI: 720p HD Ready. The default value is XGA.
- Screen Refresh Rate - this is the VGA output refresh rate and provides 60Hz and 75Hz rates for different kinds of projectors.
- Login Code - select Disable, Random or Use the following code to set a specified 4-character Login Number
- Apply - applies any changes made to these settings
- Cancel - cancels any changes made to these settings

Change Passwords

This section gives you the option to change the passwords for both *Conference* and *Admin Controls*. Passwords can be up to eight alphanumeric characters long



Reset to Default

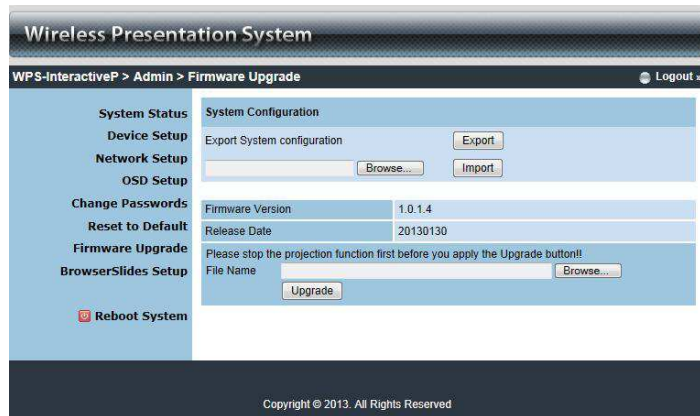
This section allows you to restore the Wireless Projector Server to its' default factory settings



- Click *Apply* to restore the factory default settings

Firmware Upgrade

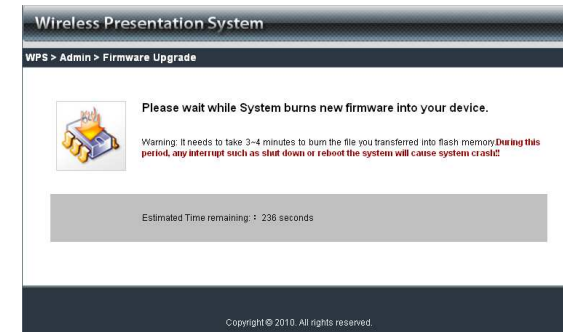
This section shows further information about your *Firmware Version* and allows you to upgrade the Wireless Projector Servers Firmware



To upgrade the Wireless Projector Servers Firmware;

1. Download the latest *Firmware Image* file from the Lindy Web site
2. Browse for the downloaded *Firmware Image* on your computer and click the *Upgrade* button in the Wireless Projector Server Web Admin Management Page to start the install

3. A warning message will show with a countdown



4. After a few minutes, a complete message will be shown on screen
5. Restart the Wireless Projector Server for any changes to take effect

Important

DO NOT TURN OFF THE POWER SUPPLY UNTIL THE RESTART COMPLETES

Reboot System

This section gives you the option of remotely rebooting the Wireless Projector Server



1. Click *Reboot* to reboot the Wireless Projector Server
2. The Wireless Projector Server will immediately start to reboot

Important

DO NOT TURN OFF THE POWER SUPPLY UNTIL THE RESTART COMPLETES

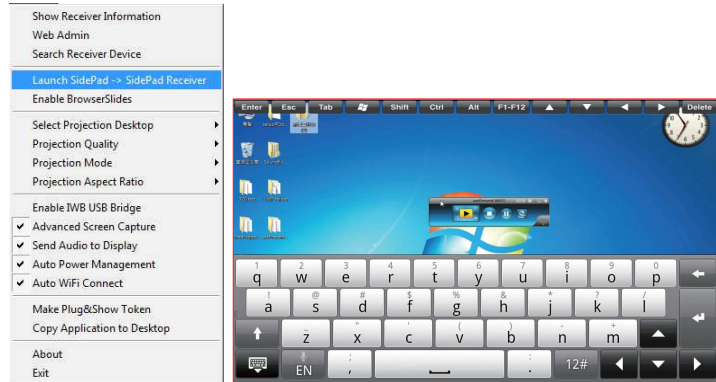
Additional Software

Launch SidePad -> SidePad Receiver

- 1 Open the main menu of the WPS application(Win/Mac), and choose the item, "Launch SidePad -> Sidepad Receiver"

Note: You have to download the "SidePad receiver" on your Android/iOS device, then connect the Android/iOS to WPS device through WiFi and Launch "SidePad Receiver".

- 2 In seconds, you shall see the PC desktop shown on the mobile device. Use two fingers to pinch or one finger to pan the desktop image and control it by single or double clicks!



Enable BrowserSlides

- 1 Click the "Enable BrowserSlides", it will start to broadcast your slides to the browser on connected mobile devices.

Note: Audience need to connect to WPS WiFi Network, open the browser and click the "BrowserSlides" button to start receiving the slides.



Making a Plug&Show (PnS) Token

The PnS Token USB Auto Setup Wizard copies the Wireless Projector Server Utilities and drivers to a USB-drive

1. Select *Make PnS Token...* from the *Utility Menu* or click on the *Pns icon* in the WPS-MultiMediaPlus desktop folder



2. Follow the on screen instructions to copy files to a USB-drive



MobiShow

The *MobiShow App* is a FREE third party application that allows your Android, BlackBerry, iPhone to connect to the Wireless Projector Server through a WiFi connection. The following instructions are for the Android v2.0 / BlackBerry -v2.0 / iPhone - v2.1 of the App. Graphics may vary from those shown












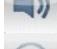





1. Download & install the *MobiShow App* from the App Store / App World / Google Play
2. Enable WiFi and connect to the Wireless Projector Server WLAN
3. Launch the *MobiShow App*
4. MobiShow will search for the Wireless Projector Server
5. When prompted enter the Login Code shown in the upper left corner of the projection screen to connect to the Wireless Projector Server

Making a PC-less Presentation

To make a PC-less presentation from your Smartphone using MobiShow select;

- PhotoSender to send still photos from your phone to the projector screen
- PtG to show a PowerPoint presentations .ppt from your Smartphone. Before using PtG you will need to convert the .ppt using the *PtG converter.exe* from the software disc
- MediaCenter to stream & control multimedia files from your phone

Button Descriptions

	Go to previous photo file		Go to previous page		Go to previous media file
	Start/Pause slide show		Go to previous step		Go to next media file
	Stop slide show		Go to next step		Decrease the volume level
	Go to next photo file		Go to next page		Increase the volume level
	Rotate to left-90 degree		Play		Mute/Un-mute
	Rotate to right-90 degree		Stop		

Using the PtG Converter

The *PtG Converter* converts PowerPoint files for use with MobiShow

After installing the *PtG Converter* from the software disc the *PtG Converter* icon will appear on your desktop



After opening the *PtG Converter* the following UI will display on your desktop

PtG Converter UI



- Click the *Convert* button to select a PowerPoint file .ppt to convert
- The *Preview* button allows you to expand or collapse the conversion preview
- Click the *Play* button to playback a selected PtG file
- Click the *Open* button to open a select a file for playback

Mac Client Utility

Launch Application

- 1) Enable your WiFi and connect to WPS device.
- 2) Execute WPS client software for Mac.

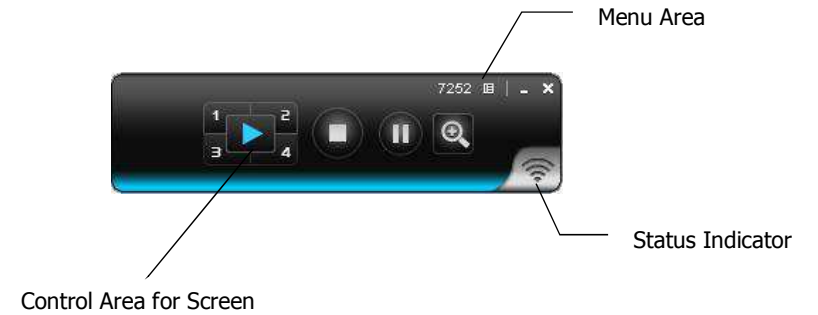


- 3) Launch WPS software and enter the login code.



- 4) Start Projection.

Main User Interface



Screen Projection

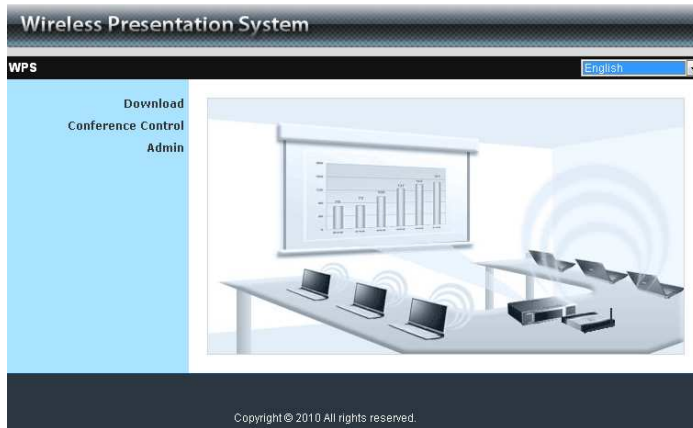
Click the "Play" button for full or split screen, you can project the main screen on to the display immediately, click the "Pause" button, you can freeze you projection screen, and click the "Stop" button to stop projecting your screen.

Button	Description
	Full Screen projection
	Project to Split #1
	Project to Split #2
	Project to Split #3
	Project to Split #4
	Stop projecting
	Pause projecting
	Enable the Windows Magnifier function

Web Management

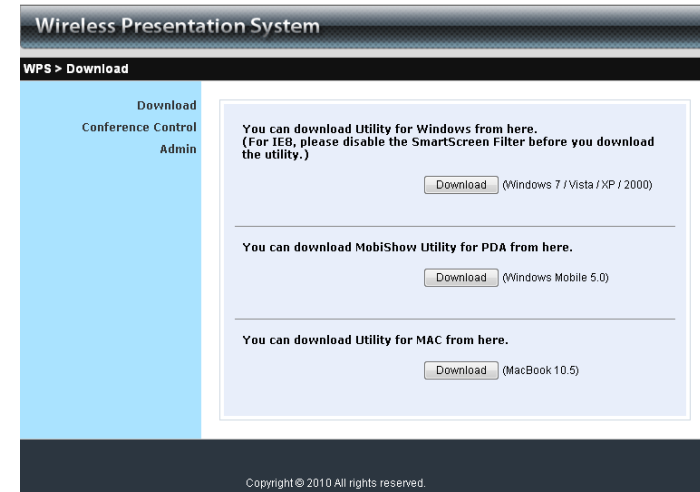
Home Page

1. Make sure your PC connect to WPS box successfully
2. Open your browser, it will enter WPS home page automatically
3. If not, enter your IP address on the browser, you can see the IP on the projector screen
4. The default IP is 192.168.100.10



Download Software





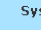

1. Select "Download software" function
2. Please select the "Win 7 / Windows Vista / XP / 2000" or "Windows Mobile 5/6" or "Mac Utility" and execute the installation program
3. Follow Installation Wizard instructions to proceed till the installation process complete
4. If pop up "**Windows Security Alert**" because Windows firewall block this program. You just press "**Unblock**" button to continue installation
5. Once installation complete, a utility shortcut come out on the screen



Conference Control

- 1) This function allows you to host a meeting smoothly without projector cable swapping and each participant can show their presentation easily.
- 2) Select "**Conference Control**" function.
- 1) Enter password, the default value is "trainer", and then press [Login].



- 2) After login, you can see a User List on the screen which indicates all of users connected to WPS box.
- 3) There are three columns, "**Computer Name**", "**Play Control**" and "**IP Address**".
- 4) Play Control. There are six buttons, including Play(Full) , Play Split #1 , Play Split #2 , Play Split #3 , Play Split #4  and Stop .
- 5) User List

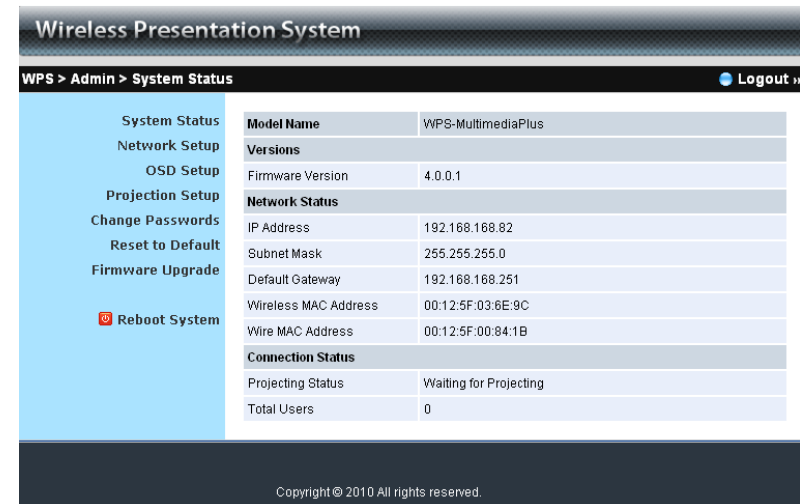


Login Web Admin



1. Click [**Admin**] and then enter password to login web page.
2. The password default value is "admin".

System Status



Click [**System Status**], shows current system status.

Model Name: Product model name

Versions:

1. **Firmware version no.:** Product firmware version number.

Network Status:

1. **IP address :** IP address of WPS device.
2. **Subnet Mask :** subnet mask
3. **Default Gateway :** default gateway
4. **Wireless MAC address :** wireless MAC address
5. **Wire MAC address :** wired MAC address

Connection Status:

1. **Projecting status:** which is "Waiting for projecting" or "Projecting"
2. **Total Users:** It shows how many users login into WPS box.

Network Setup

There are many kinds of operating configurations as below.

< Auto-Configuration Network Setup >

The default setting of the WPS box is DHCP client. When the WPS box is connected to a LAN that already has a DHCP server present, the WPS box takes an IP address assigned to it by the server. When the WPS box is connected to a LAN that does not have a DHCP server, the WPS box becomes the DHCP server in the network.

< IP Setup >

- ◆ You can select "obtain IP address automatically" or "Use the following IP address"
- ◆ IP Address: The default value is 192.168.100.10.
- ◆ Subnet Mask: The default value is 255.255.255.0
- ◆ Default Gateway: The default value is 192.168.100.10
- ◆ DNS Server: The default value is 192.168.100.10

<DHCP Server Setup >

- ◆ You can select "auto(Enable/Disable DHCP Server" or "Disable")
- ◆ Start IP: The start IP address of DHCP Server.
- ◆ End IP: The end IP address of DHCP Server
- ◆ Subnet Mask: The default value is 255.255.255.0
- ◆ Default Gateway: The default value is 192.168.100.10
- ◆ DNS Server: The default value is 192.168.100.10

< Wireless Setup >

- ◆ Wireless LAN: The default value is "Enable"
- ◆ Region: default value is "Worldwide".
- ◆ SSID: SSID string, max. Length is 32 bytes.
- ◆ SSID Broadcast: The default value is "Enable"
- ◆ Channel: to set fixed channel or Auto. The "Auto" means after power on WPS, it will scan all of wireless channel and select clear one channel automatically.
- ◆ Encryption: you can select "Disable" or one of WEP/WPA/WPA2 64bit or 128bit in ASCII or HEX string.
- ◆ Key: If Encryption is enabled, you have to set key value according to the encryption mode you selected.

< Gatekeeper >

Gatekeeper is designed for ensuring the enterprise network security within WPS box

- ◆ All Block can block Guest Users(through wireless) to access all office network(LAN),
- ◆ All Allow can pass Guest Users(through wireless) to access all office network
- ◆ Internet Only can block Guest Users (through wireless) from office network (LAN) but still reserve internet connection capability.

<Apply >: press button to select this mode.

<Cancel >: press button to abort action.

<Back >: Back to Operating mode main menu.

OSD Setup

Click [**OSD Setup**] button, to change OSD standby image.

- ◆ **<Restore Initial >**: Restore to default OSD standby image.
- ◆ **<Image File Upload >**: Upload the customized OSD standby image. (You need to convert the image to system defined format using provided IB Maker utility which is stored in the USB token.)

Projection Setup



Click **[Projection Setup]** button

- ◆ **<Resolution>**: SWXGA(1440*900), XGA(1024*768), WXGA(1280x800) and SVGA(800*600). The default value is XGA.
- ◆ **<Color Depth>**: provide WPS output with 16bit or 32 bit color depth. It depends on your PC settings.
- ◆ **<Screen Refresh Rate>**: This is VGA output refresh rate, provides 60 Hz and 75Hz to suit for different kinds of projectors.
- ◆ **<Login Code>**: You can select “Disable”, “Random”, or “Use the following code” to set a specified 4-characters Number.
- ◆ **<Apply>** : Confirmation and Save modifications
- ◆ **<Cancel>**: Cancel all the modifications

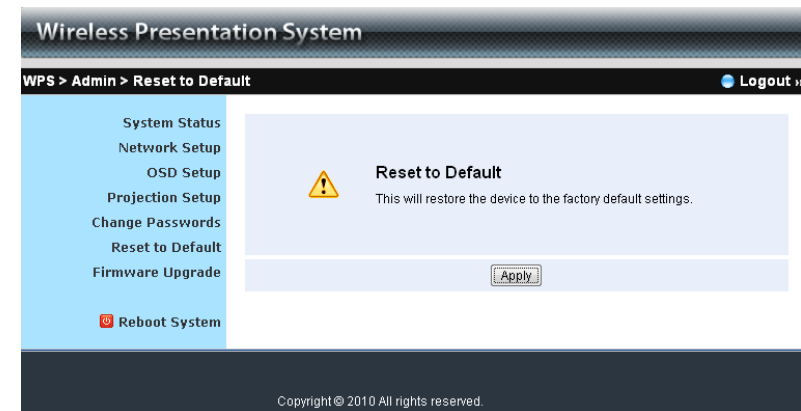
Change Passwords



Click **[Change Password]** button, to change password value.
The length of password is up to 8 characters.

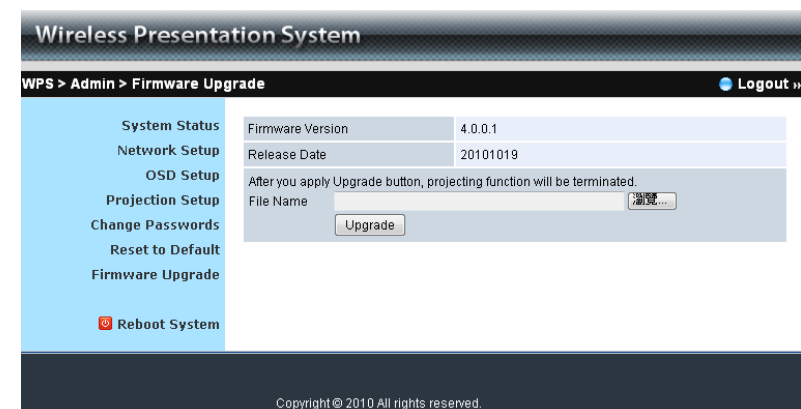
- ◆ **<Enter New Password>**: enter new password you want to change for each category.
- ◆ **<Confirm New Password>**: double confirm new password.
- ◆ **<Apply>**: Confirmation and Save modifications.

Reset to Default



Click **[Reset to Default]** button to restore factory default settings.
<Apply>: Confirmation and action.

Firmware Upgrade



Click **[Firmware Upgrade]** button to upgrade firmware.

1. Firstly, you have to get latest firmware image file from your vendor.
2. Click **<Browse>** to specify file name you want to upgrade.
3. Click **<Upgrade>** to start.
4. A warning message shown and count down counter on the screen.
5. After a few minutes, a complete message shown on the screen.
6. Restart WPS box to take effect.



Please wait while System burns new firmware into your device.

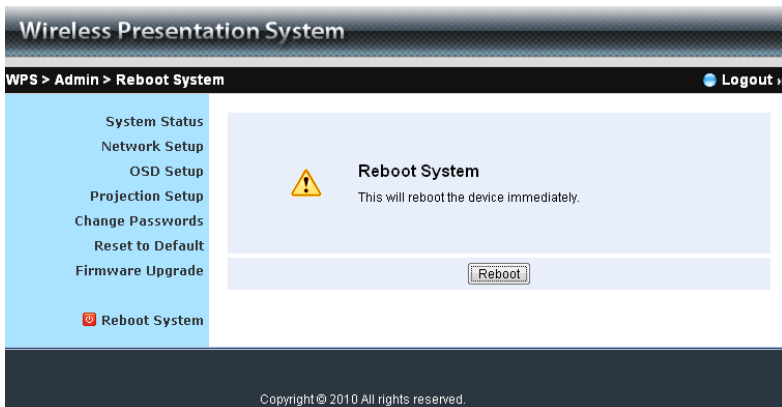
Warning: It needs to take 10~15 minutes to burn the file you transferred into flash memory. During this period, any interrupt such as shut down or reboot the system will cause system crash!!

Estimated Time remaining: : 890seconds



Warning: Don't power off WPS while firmware upgrade in progress, otherwise will cause your Box doesn't work and have to return device to your vendor for fixing.

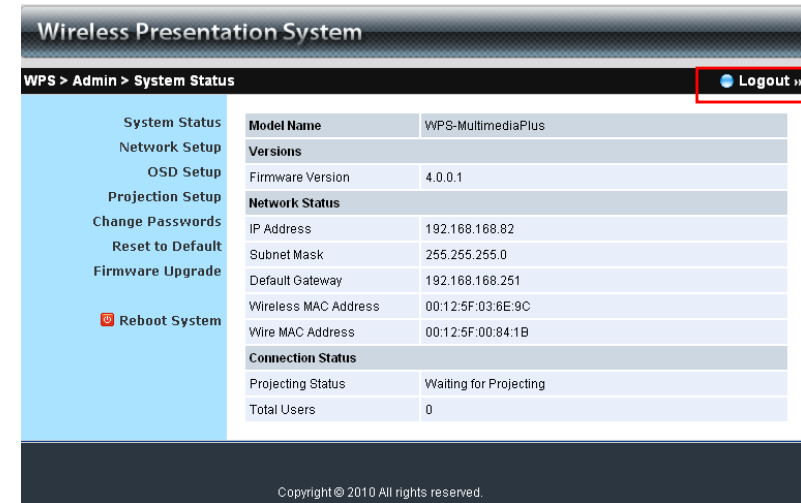
Reboot System



Click **[Reboot System]** button, to restart system

- ◆ **<Reboot>**: reboot system automatically.

Logout



Copyright © 2010 All rights reserved.

Using PtG Converter

Open "MobiShow PtG Converter" in "MobiShow\MobiShow PtG Converter" folder from "Programs" in the Start menu. The following control panel is displayed on your Desktop when it is launched.



Click the "**Convert**" button to select a PowerPoint PPT file and start conversion. PtG Converter will open the PowerPoint file and convert it to PtG format. You can see the conversion process on your Desktop.

Click the "**Preview**" button to expand or collapse the preview pane. Click "**Play**" to playback selected PtG file, or click "**Open**" to select a PtG file.



LINDY Electronics Ltd.
Sedler Forster Way
Thorndon, Stockton-on-Tees
TS17 9YV, England

Declaration of Conformity


LINDY Part Number: 32701
Description: HDMI & VGA Wireless Projector Server

We, LINDY Electronics LTD, hereby declare that the above product is in conformity with the EU Directive 2004/108/EC (Electromagnetic Compatibility), 1999/5/EC R&TTE (Radio and Telecommunications Terminal Equipment) and 2011/65/EU (Restriction of the use of certain hazardous substances - RoHS).

The following standards were used to evaluate the product:

- EN 55022:2010
- EN 55024:2010
- EN 61000-3-2:2006+A2:2009
- EN 61000-3-3:2008
- EN 62311:2008
- EN 300 328 V1.7.1 (2006-10)
- EN 301 489-1 V1.9.2 (2011-09)
- EN 301 489-3 V2.1.1 (2009-05)
- EN 60950-1:2006+A11:2009+A1:2010+A12:2011

Date: 19 September 2013

Signature: 

Name: Darren N. Casey
Position: Managing Director, LINDY Electronics LTD

LINDY Supplier Office Reference: 720156-180913
 U/P/108/00C/EMC-R&TTE-RoHS

Issue 2



LINDY-Elektronik GmbH
D-86259 Marktbergel
Postfach 110000
E-Mail: info@lindy.de

EG - Konformitätserklärung (EC - Declaration of Conformity)

Für das/for the folgende/n bezeichnete/n Produkt/e
LINDY HDMI WLAN Projector Server
Art.-Nr.: 32701

wird/hereby bestätigt, dass es den Anforderungen entworfen, die in den Richtlinien 2004/108/EG (Elektromagnetische Verträglichkeit), 2006/95/EG (Niederspannungsrichtlinie), 2009/125/EG (EMV-Direktive), 1999/5/EG (R&TTE) und 2011/65/EU, Article 13 (RoHS2 Direktive), festgelegt sind.

Diese Erklärung gilt für alle Exemplare der o.g. Artikelnummer/n. Zur Beurteilung des Produktes hinsichtlich elektromagnetischer Verträglichkeit wurden folgende Normen herangezogen:

- EN 55022 : 2010
- EN 55024 : 2010
- EN 61000-3-2 : 2006/A2 : 2009
- EN 61000-3-3 : 2008
- EN 60950-1:2006/A11:2009+A1:2011
- EN 62075 : 2012
- EN 301 489-1 V1.9.2 (2011-09)
- EN 301 489-3 V2.1.1 (2009-05)
- EN 62311 : 2008
- EN 300 328 V1.7.1 (2006-10)
- EN 90981 : 2012

Diese Erklärung wird verantwortlich für LINDY-Elektronik GmbH abgegeben durch

Jürgen Lindenberg
 Geschäftsführer
 Mannheim, 20. Sep. 2013



RfL LINDY-S-Office: 7218513092013

www.lindy.de

FCC Warning

This device complies with part 15 of the FCC Rules. Operation is subject to the following two conditions:

1. This device may not cause harmful interference, and
2. This device must accept any interference received, including interference that may cause undesired operation

LINDY Herstellergarantie- Hinweis für Kunden in Deutschland

LINDY gewährt für dieses Produkt über die gesetzliche Regelung hinaus eine zweijährige Herstellergarantie ab Kaufdatum. Die detaillierten Bedingungen dieser Garantie finden Sie auf der LINDY Website aufgelistet bei den AGB.

WEEE (Waste of Electrical and Electronic Equipment), Recycling of Electronic Products

In 2006 the European Union introduced regulations (WEEE) for the collection and recycling of all waste electrical and electronic equipment. The wheelee bin symbol shown indicates that this product must not be disposed of with household waste. Instead the product must be recycled in a manner that is environmentally friendly. For more information on how to dispose of this product, please contact your local recycling centre or your household waste disposal service. Each individual EU member state has implemented the WEEE regulations into national law in slightly different ways. Please follow your national law when you want to dispose of any electrical or electronic products. More details can be obtained from your national WEEE recycling agency.

Germany / Deutschland

Die Europäische Union hat mit der WEEE Richtlinie umfassende Regelungen für die Verschrottung und das Recycling von Elektro- und Elektronikprodukten geschaffen. Diese wurden von der Bundesregierung im Elektro- und Elektronikgerätegesetz – ElektroG in deutsches Recht umgesetzt. Dieses Gesetz verbietet vom 24.März 2006 an das Entsorgen von Elektro- und Elektronikgeräten über die Hausmülltonne! Diese Geräte müssen den lokalen Sammelsystemen bzw. örtlichen Sammelstellen zugeführt werden! Dort werden sie kostenlos entgegen genommen. Die Kosten für den weiteren Recyclingprozess übernimmt die Gesamtheit der Gerätehersteller.

France

En 2006, l'union Européenne a introduit la nouvelle réglementation (DEEE) pour le recyclage de tout équipement électrique et électronique.
 Chaque Etat membre de l' Union Européenne a mis en application la nouvelle réglementation DEEE de manières légèrement différentes. Veuillez suivre le décret d'application correspondant à l'élimination des déchets électriques ou électroniques de votre pays.

Italy

Nel 2006 l'unione europea ha introdotto regolamentazioni (WEEE) per la raccolta e il riciclo di apparecchi elettrici ed elettronici. Non è più consentito semplicemente gettare queste apparecchiature, devono essere riciclate. Ogni stato membro dell' EU ha tramutato le direttive WEEE in leggi statali in varie misure. Fare riferimento alle leggi del proprio Stato quando si dispone di un apparecchio elettrico o elettronico.

Per ulteriori dettagli fare riferimento alla direttiva WEEE sul riciclaggio del proprio Stato.



LINDY No. 32701

1st Edition, September 2013

www.lindy.com