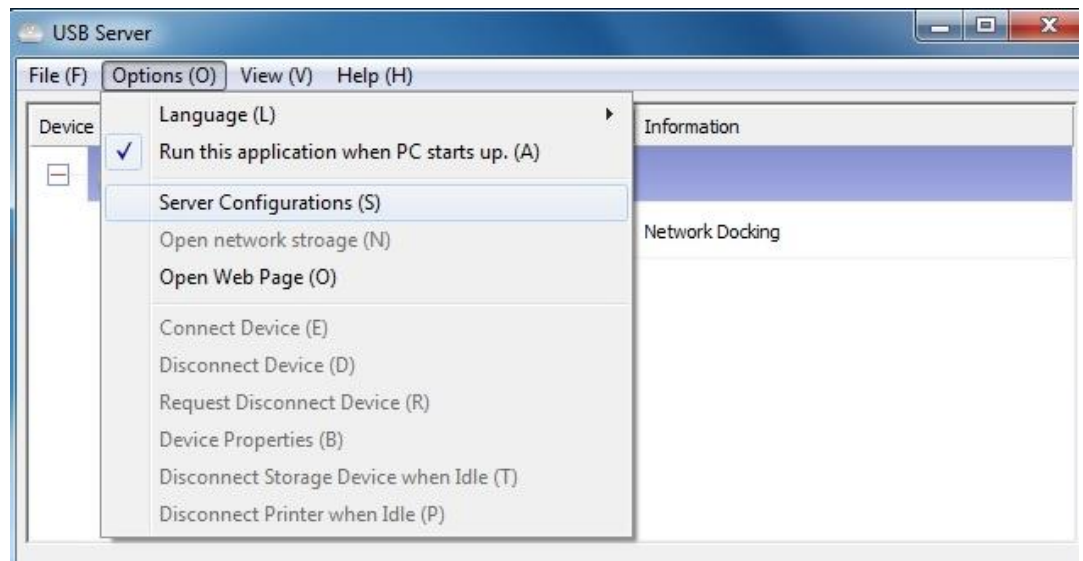


Firmware update procedure for Windows 8/8.1 support (38080/38081)

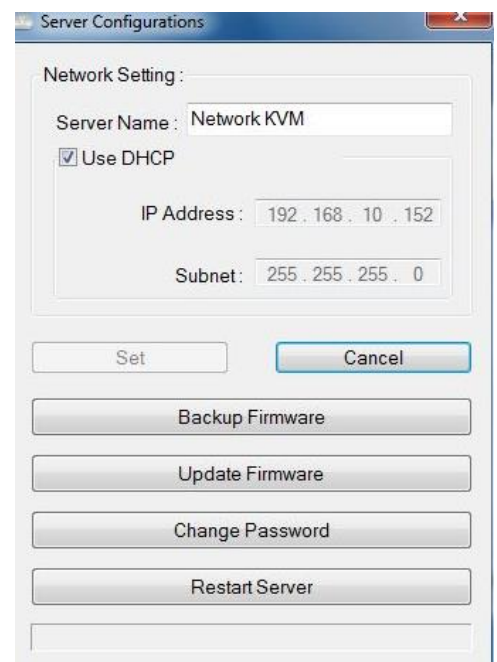
1. 38080/38081 have updated firmware for Windows 8/8.1 support. This firmware update must be done under Windows 7
2. Fully install 38080/38081 under Windows 7 by following the INSTALLATION instructions in the QIG using the software and drivers included on the CD. (Do not install Windows 7 update drivers!)
3. Start the USB server software and right click on the Blue info sign

4. Click on Options on the menu and select Server Configurations while the device is not selected.

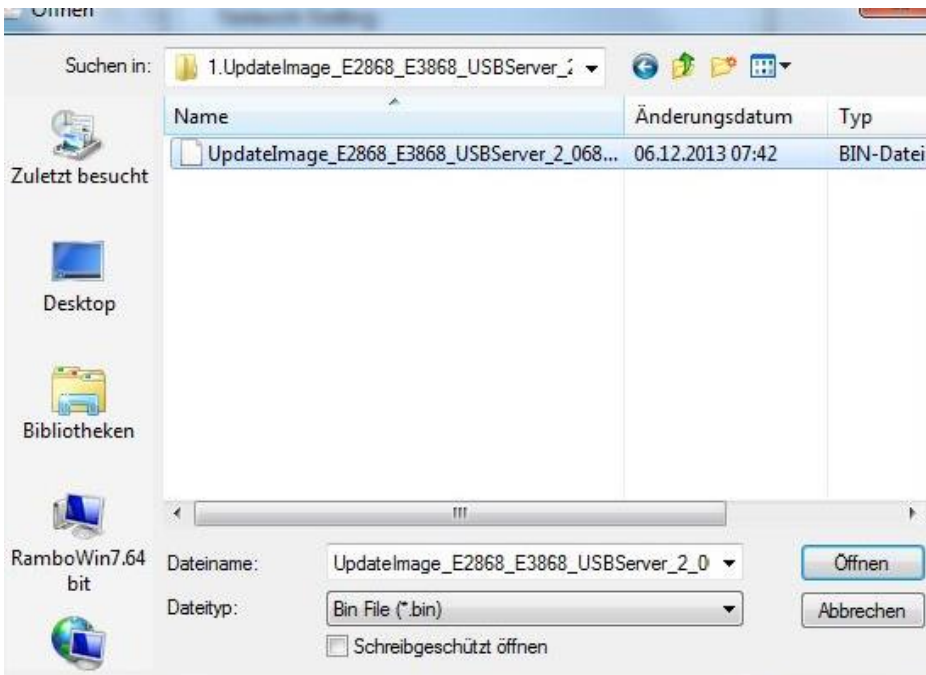


5. Download the following files from LINDY.com
 - i. Firmware 2.068 [click here](#)
 - ii. USB Server software for Windows 8/8.1 [click here](#)
 - iii. Network Audio update driver [click here](#)
 - iv. DisplayLink v7.5 [click here](#)

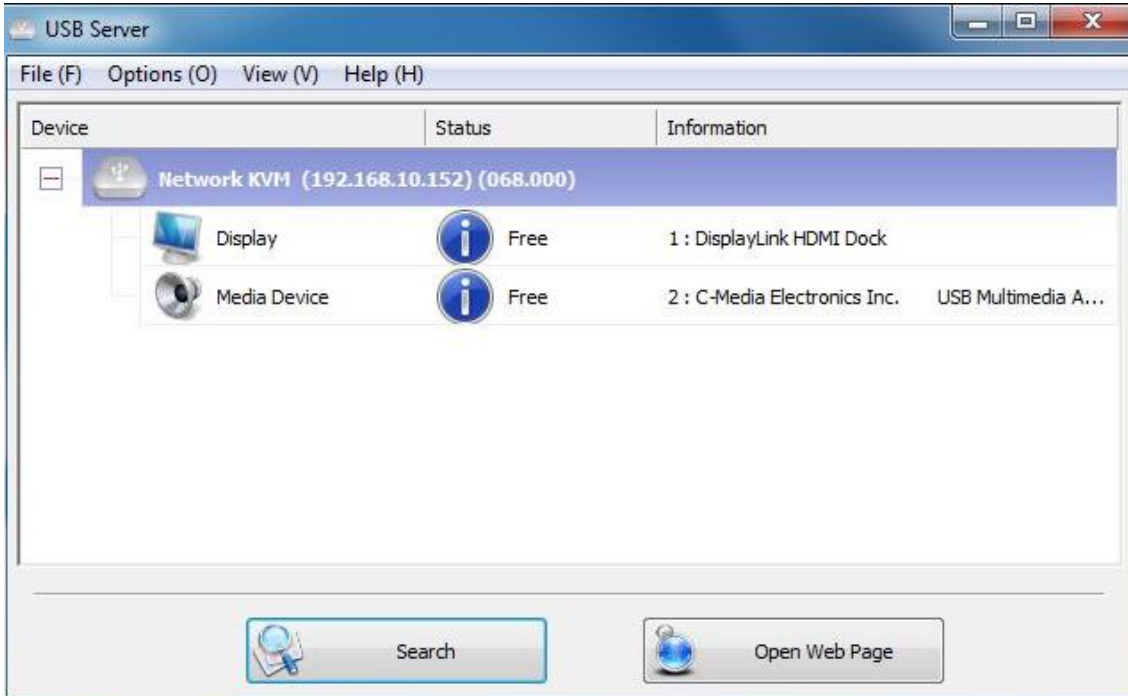
6. Then click on "Update Firmware"



7. Select the firmware .bin file



8. Firmware will be updated to V2.068, wait for a few seconds until “Firmware successfully updated” is shown. The device will now restart and will now show two separate devices listed for each listed adapter.

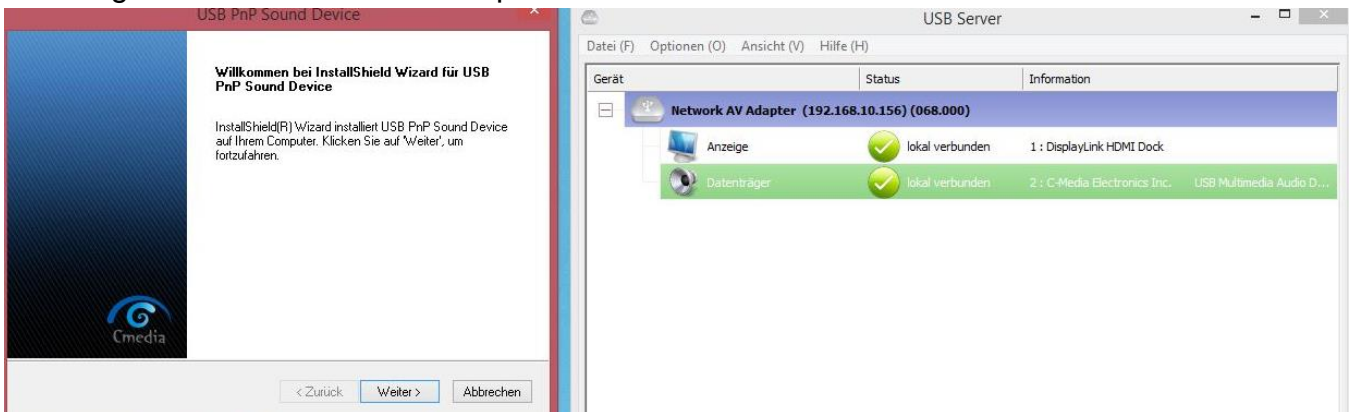


9. The firmware update is now completed and you can shut down the Windows 7 computer and boot up the Windows 8 system.

10. Install USB Server software for Windows 8/8.1 on Windows 8/8.1 and start the software.
11. Now select the devices and connect each. Let Windows automatically install the device drivers in the background

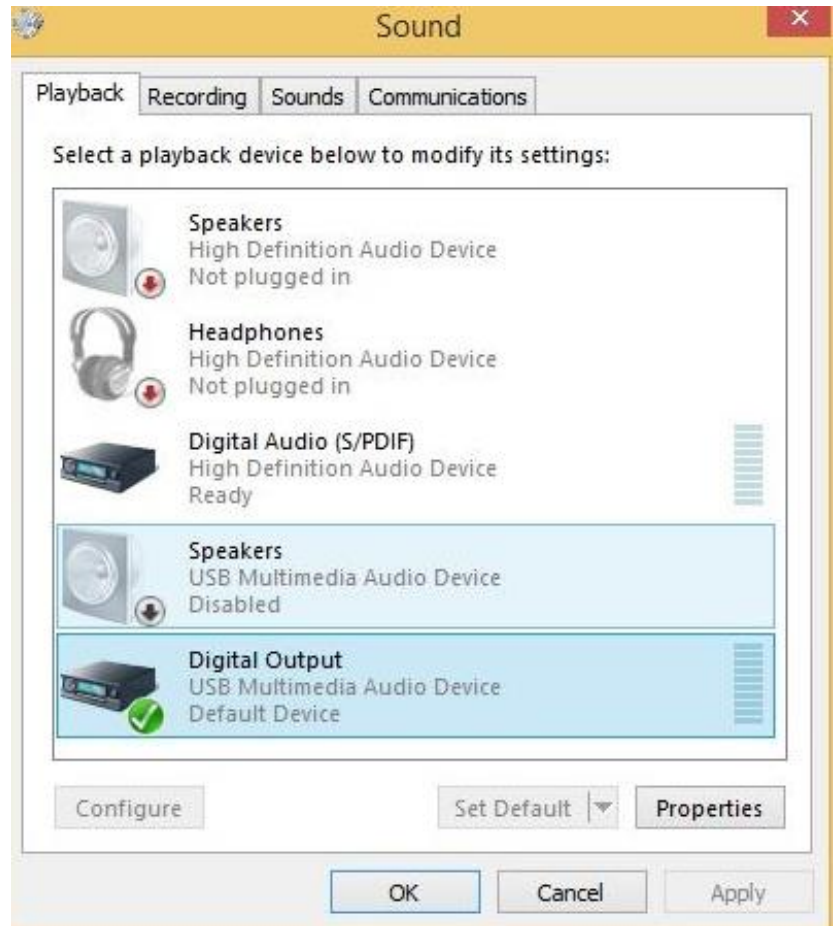


12. Once Windows has finished with device driver updates, please upgrade the audio drivers by installing the Network Audio driver pack.



13. Windows 8/8.1 will automatically install the latest DisplayLink drivers. If not, please install the DisplayLink v.7.5 provided by LINDY

14. Please select Digital Output under Windows sound devices when using HDMI audio for 38080



15. 38080/38081 upgraded to Firmware V2.068 require the newer USB Server software. Please install this USB Server software also on your Windows XP, Vista and 7 machines if you want to use it from the older OS.
16. For the best performance and stability, please keep your Windows display drivers up to date and install the latest DisplayLink drivers when available.