

When opened your browser will display the following page with the remote console window on the right.

To launch the Remote Console click on the **Console** icon –



Remote Console

Starting the Remote Console opens an additional window. It displays the screen content of your host system. The Remote Console will behave in exactly the same way as if you were sitting directly in front of the screen of your host system. However, be aware of the fact that the host system will react to keyboard and mouse actions with a slight delay depending on the bandwidth of the connection.

Therefore a double mouse cursor mode can be used showing both the local and the remote cursor in parallel.

The upper part of the Remote Console window contains a control bar. Using its elements you can see the state of the Remote Console and influence the local Remote Console settings. There are several options to choose from, below is an introduction to the most important ones. Please refer to the User Manual for further options and information.

Commands like CTRL+ALT+DEL are always interpreted from the local computer and therefore must be sent by a button from the control bar or from a dedicated command tool.

Auto Adjust button

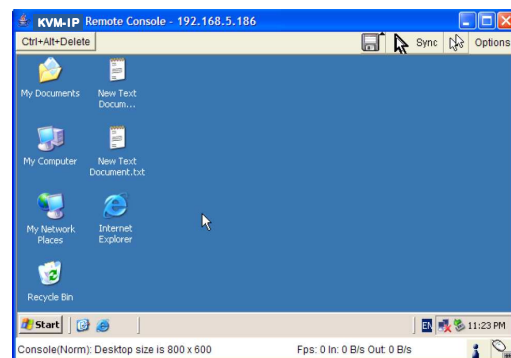
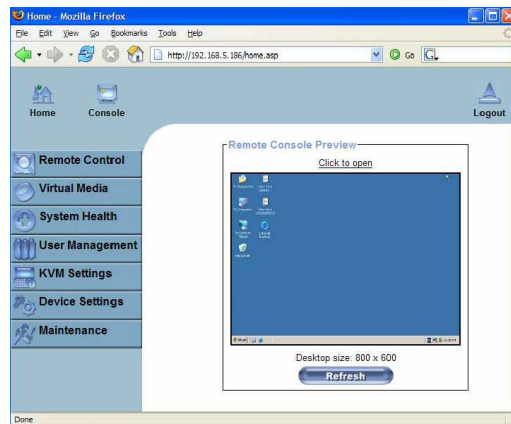
If the video display is poor quality or distorted in some way, click this button and wait a few seconds while the IP Access Switch adjusts itself for the best possible video quality.

Sync mouse

Choose this option in order to synchronize the local and remote mouse cursors. If the mouse does not synchronize, select Intelligent **Sync** from the **Mouse Handling** sub menu of the Remote Console **Option** menu.

Video Settings (from within the Options Menu)

This opens a new window from which you can adjust brightness, contrast etc. of the displayed picture in the Remote Console window.



This Quick Start Guide provides a brief introduction to the IP Access KVM Switch Classic and shows you how to quickly set up the device for use. For more detailed operation instructions please consult the full User Manual on the supplied CD.

Package Contents

- IP Access KVM Switch Classic
- Rubber feet & 19" rack mount kit
- Power supply 100...240VAC / 5VDC
- RS232 Serial cable
- KVM combo cable PS/2 & VGA
- USB A to Mini-B Cable, 1m
- Software & User Manual CD
- This Quick Start Guide

Introduction:

The IP Access Switch provides remote KVM over IP access to a computer or KVM switch. It converts all keyboard video and mouse signals and sends them as TCP/IP signals over your LAN/WAN connection. The remote computer or KVM switch may be accessed from any computer connected to your network (or via RS232 port and an external modem to a telephone line) and provides full KVM access including BIOS level access to all the connected computers. The IP Access Switch can be accessed via a web browser and via dedicated software tools included with the product. It uses secure encrypted sessions and password authentication.

Please note that KVM over IP does not operate in a "real time" environment and that some degree of time delay will occur due to limiting factors such as available bandwidth and network traffic.

Installation:

Before you install the IP Access switch ensure all connected devices are switched off and the power supply is unplugged. The IP Access Switch is installed in between your computer or KVM switch and its console. Use the supplied 3in1 KVM combo cable to connect the computer or KVM switch to the IP Access Switch ports labeled **PC/ KVM switch**. Connect your local console monitor, mouse and keyboard to the ports labeled **Console**. If you wish to use the USB Virtual Storage feature, then connect the supplied USB cable to your computer and the IP Access Switch. Connect the IP Access Switch to your network via RJ45 cable or to an external modem via RS232 cable and reconnect the power supply.

Configuration

By factory default, the IP Access Switch is configured to a fixed IP. It is recommended that you configure a fixed IP assignment to the MAC address. You can find the units specific MAC address details on the printed label on the underside of the IP Access module. Use the configuration tool **PSETUP** included on the supplied CD to change the network settings of the IP Access Switch.

Parameter	Value
IP auto configuration	none
IP-Address	192.168.0.70
Net-mask	255.255.255.0
Default-Gateway	None

Quick Installation is now complete. Refer to the full User Manual on the supplied CD for more information about the advanced features of the KVM over IP Access Module!

IP Access Switch Setup Tool

Connect the IP Access KVM Switch CLASSIC to your computer either via a local network, or via USB. If you use a USB connection Windows will detect the IP Access KVM Switch CLASSIC as a **'Removable Disk'** and an appropriate drive letter will be assigned.

Start the setup tool from the CD ROM -



On the upper left corner, the MAC address of the IP Access Switch is displayed. To detect the MAC address, press the **Refresh Devices** button. The displayed MAC address should correspond to the printed address shown on the label on the base of the IP module.

On the lower right corner of the window, there are two buttons: **Query Device** and **Setup Device**. Press the **Query Device** button to display the preconfigured values of the network configuration. The values are displayed in the text fields located above. If necessary, adjust the network settings to your needs. To save the changes enter a user login and a password (the default user name is **super**, the default password is **pass**) and then press the **Setup Device** button.

When set to the required network settings of your network the IP Access Switch is ready to be used.

Logging In

The IP Access Switch can be entirely managed using a standard web browser with Java support installed. IE 6.0, Netscape 7.0 or Mozilla 1.6 or higher are recommended. The browser **MUST** accept Cookies. You can access the IP Access Switch using the insecure HTTP protocol, or using the encrypted HTTPS protocol. Whenever possible, use HTTPS. Refer to section 5.5.3 Security to disable insecure http access and force HTTPS access.

In order to use the Remote Console window of your managed host system, the browser must feature Java Runtime Environment support. If the browser has no Java support (such as on a small handheld device), you can still maintain your remote host system using the administration forms displayed by the browser itself.

Important: For optimum operation, we recommend you install the latest version of Sun's Java Virtual Machine which can be downloaded from the following web site: www.java.com

Launch your web browser. Direct it to the address of your IP Access Switch.

Example: Type the following in the address line of your browser when establishing a secured connection:

https://<IP address of IP Access Switch>

This will lead you to the IP Access Switch login page as shown below:

The IP Access Switch has a built-in super user account that has all the permissions enabled to administrate your IP Access Switch switch:

Login name	super (factory default)
Password	pass (factory default)

Once logged into the IP Access Switch successfully, the main page appears.

Note: The user super cannot log on via a RS232 connection.

IMPORTANT: Please make sure you change the super user password immediately after you have installed and accessed your IP Access Switch for the first time. Failing to change the password for the super user is a severe security risk and could result in unauthorized access to the IP-KVM and to the host system including potential damage and loss of data!