

LINDY®

CONNECTION PERFECTION

Multi-Function Cable Tester Pro

Manual

English



LINDY No. 43069

www.lindy.com



User Manual

Introduction

Thank you for purchasing the LINDY Multi-Function Cable Tester Pro. This Cable Tester allows you to test and analyse a comprehensive range of connector types and commonly used cables.

The Cable Tester Pro includes a wire mapping function to test each pins connection and identify cable connectivity. It also shows pin-to-pin connectivity and can save up to 100 separate test results. This Data can then be saved and uploaded to a PC via the USB interface for further analysis.

Cable pin wiring is easily and efficiently determined using the integrated LCD display. Specific cable pin wirings can also be set as profiles for Quick or Batch Testing. The unit also includes a built-in extension port for additional types of cable testing, a feature not included on previous cable testers.

The Cable Tester Pro is excellent for performing pin-to-pin tests on a variety of PC cables and as a diagnostic and troubleshooting device.

Features

- Identify cable connectivity
- Support 17 types of PC connectors
- Extension port for additional types of cable testing
- 100 test results can be saved and transferred to PC via USB interface
- Alphanumeric LCD display with back light function
- Includes test cable, browse and quick test function
- Low battery indicator

Specifications

- Connectors - IDC40, IDC40 extension port, HD15 M/F, Audio 3.5mm, RJ11, RJ45, eSATAp 5V, SATA 7pin, DisplayPort, USB 2.0/3.0 Type A, USB 2.0/3.0 Type B, USB 2.0 Micro-A/B & 3.0 Micro-B, USB 2.0 Mini-B, HDMI, Mini HDMI, Micro HDMI
- LCD Display - 2 rows, 16 characters with backlight
- Power - DC 9V battery compartment, USB interface for static power supply

Button Definitions

- **ON/OFF** - power on/off the tester
- **UP/DOWN** - select functions
- **SAVE** - save the test result for download and analysis
- **DELETE** - delete records
- **BACK** - returns to previous selection
- **ENTER** - run the selected function

User Manual

Operating Instructions

Press the **ON/OFF** button to power up the tester, a 'beep' will indicate the tester is working. Press the **ON/OFF** button once more to switch the tester fully on.

Quickly press the **ON/OFF** button once to switch the LCD's back light on/off. By holding the **ON/OFF** button the LCD will display the following message.

Tester Power Off

The tester will power down when you release the button.

Functions

Press the **UP** or **DOWN** buttons to select the desired mode:

Pin Test: for pin-to-pin cable testing.

Quick Test: for testing against a defined standard.

Browse: to review saved data.

Delete: to delete records.

Settings: to set buzzer on/off, quick test result details on/off, auto function on/off, and reviewing firmware information.

Press **ENTER** for the desired selection.

PinTest

Use the **UP** or **DOWN** buttons to select the pin number for the cable you want to test, then press **ENTER** to start testing.

01 ← 04 06 07
08 09 15 01

When testing is complete the LCD will display the pin-to-pin connectivity results as follow.

A01 – B01 A02 – B02
A03 – B03 A04 – B04

You can check each pin-to-pin test result by pressing the **UP** or **DOWN** buttons and press **ENTER** to select the pin number or press **BACK** to return to main menu.

The → indicates there are further pages of test results.

If no cables are connected to the tester, it will display the test results as follow.

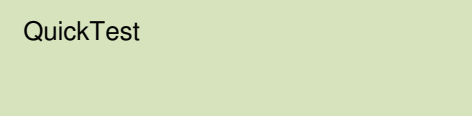
A01 B01 A02 B02
A03 B03 A04 B04

User Manual

QuickTest

The Cable Tester Pro's **QuickTest** function allows you to test a large number of cables in a short time.

Select **QuickTest** in the main menu then press **ENTER**.



QuickTest

Select **Standard Detail** to create the pin-to-pin connection to be tested. The 'Standard' will be compared to the other cables and determine whether these cables are good or bad. The 'Standard' cable is automatically saved as the 'Standard Record'.

V = Defined standard

X = Standard needs defining

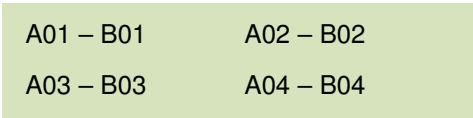
Once the 'Standard' is defined select **QuickTest**.

If the cable's pin-to-pin connectivity matches the standard, the Cable Tester Pro will show **PASS**, and 'beep' once. Press the **DOWN** button to browse the detailed pin-to-pin connection results.

If the cable's pin-to-pin connectivity *DOES NOT MATCH*, the Cable Tester Pro will show **FAIL**, and 'beep' once. Press the **DOWN** button to browse the detailed pin-to-pin connection results.



PASS



A01 – B01

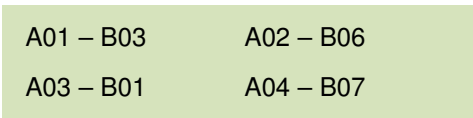
A02 – B02

A03 – B03

A04 – B04



FAIL



A01 – B03

A02 – B06

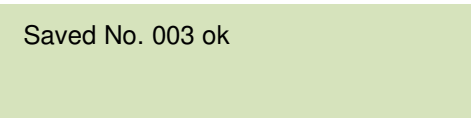
A03 – B01

A04 – B07

Browse

Select **Browse** mode from the main menu to review or delete previous tests. Press **ENTER** to review test records or **DELETE** while displaying the test record.

To review a saved record, select the **Browse** function in the main menu. Press the **UP** or **DOWN** buttons to select the desired record and press **ENTER** to display the test data.



Saved No. 003 ok

After pressing the **DELETE** button, the tester will display two options in the menu: **DeleteOne** or **DeleteAll**.



DeleteOne

DeleteAll

User Manual

When deleting a specific record select **DeleteOne** and press the **UP** or **DOWN** buttons to choose the record you want to delete. Press **ENTER** to delete the record. (*Note: pressing **ENTER** again will delete the previous saved record.*) To delete all records select **DeleteAll**. Press **BACK** to return to the main menu.

To upload test data to a computer, both the Cable Tester Pro driver and software (included) must be installed.

Settings

In the **Settings** menu, you can choose to turn on/off the buzzer, test details or the auto off function.

V = On

X = Off

You can also review the firmware information with the **About** option.

Driver Installation

Before Installation uninstall any TEST-i_Series drivers via 'Add or Remove Programs' in the Control Panel.

How to Install

Windows XP/Vista/7 (only).

Setup should start automatically after inserting the CD in the CD-ROM. If this process does not start after several seconds double-click **My Computer** on your desktop (or click the **Start** button, and click **My Computer**) right-click your CD drive and then click **Auto Play**.

Click the **setup.exe** > Select your **Operating System** > Select a **Destination Folder**.

*Note: If an older version of the driver is detected the program will ask you to remove it before installing the new one. Click **Yes** to uninstall the existing driver and continue.*

*Note: If an unsigned driver installation warning is displayed, ignore this dialogue and click **Continue**.*

Once installation is complete Reboot your computer.

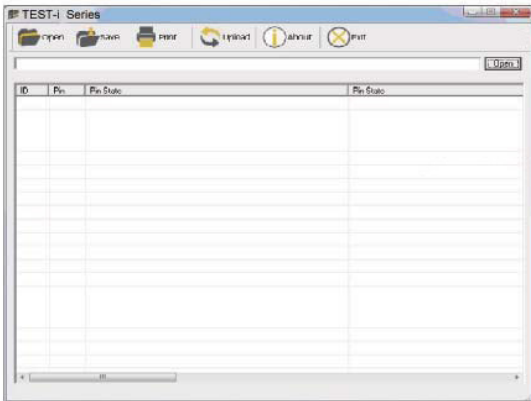
A Cable Tester Pro icon will now display on the Desktop.

User Manual

Cable Tester Software

Connect the Cable Tester Pro to your computer via the USB cable and click the Cable Tester Pro icon on the Desktop.

Test-i_Series table will open. The Toolbar includes Open, Save, Print, Upload, About and Exit. Test results include ID, Pin and Pin State. Make sure the device is connected properly and all connections are secure.



Toolbar Description

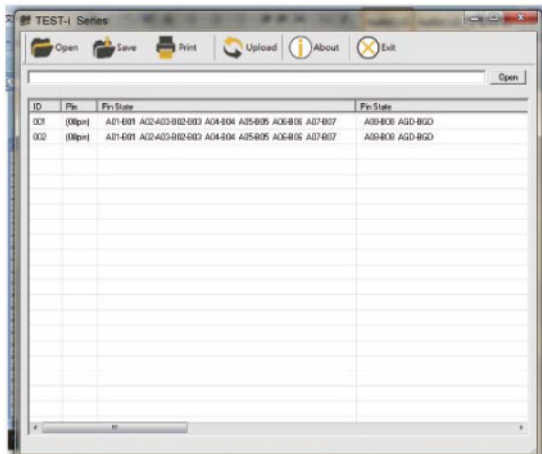
Open the file that has been saved.

Save test result.

Print test result.

Upload data that has been saved on the Cable Tester Pro.

Click the **Upload Data** button to upload data. Click **Refresh Dev** to refresh the device.



Problems

(X) (Y)

A (X) - B (X)

A (X)

A (X) - A (Y) - B (X) - B (Y)

A (X) - B (Y)

- Shows the number of the referring pin.

- Cable is Good.

- No connection/Broken Circuit.

- The connection is Shorted/ Cable Defective.

- The connection is Miswired/ Cable Defective.

CE & Recycling

CE Certification

This equipment complies with the requirements relating to electromagnetic compatibility, IEC/EN61000-4-2/3 the essential protection requirement of Council Directive 89/336/EEC on the approximation of the laws of the Member States relating to electromagnetic compatibility.



WEEE (Waste of Electrical and Electronic Equipment), Recycling of Electronic Products

United Kingdom

In 2006 the European Union introduced regulations (WEEE) for the collection and recycling of all waste electrical and electronic equipment. It is no longer allowable to simply throw away electrical and electronic equipment. Instead, these products must enter the recycling process.

Each individual EU member state has implemented the WEEE regulations into national law in slightly different ways. Please follow your national law when you want to dispose of any electrical or electronic products. More details can be obtained from your national WEEE recycling agency.

Germany

Die Europäische Union hat mit der WEEE Richtlinie umfassende Regelungen für die Verschrottung und das Recycling von Elektro- und Elektronikprodukten geschaffen. Diese wurden von der Bundesregierung im Elektro- und Elektronikgerätegesetz – ElektroG in deutsches Recht umgesetzt. Dieses Gesetz verbietet vom 24. März 2006 an das Entsorgen von entsprechenden, auch alten, Elektro- und Elektronikgeräten über die Hausmülltonne! Diese Geräte müssen den lokalen Sammelsystemen bzw. örtlichen Sammelstellen zugeführt werden! Dort werden sie kostenlos entgegen genommen. Die Kosten für den weiteren Recyclingprozess übernimmt die Gesamtheit der Gerätehersteller.

France

En 2006, l'union Européenne a introduit la nouvelle réglementation (DEEE) pour le recyclage de tout équipement électrique et électronique.

Chaque Etat membre de l' Union Européenne a mis en application la nouvelle réglementation DEEE de manières légèrement différentes. Veuillez suivre le décret d'application correspondant à l'élimination des déchets électriques ou électroniques de votre pays.

Italy

Nel 2006 l'unione europea ha introdotto regolamentazioni (WEEE) per la raccolta e il riciclo di apparecchi elettrici ed elettronici. Non è più consentito semplicemente gettare queste apparecchiature, devono essere riciclate. Ogni stato membro dell' EU ha tramutato le direttive WEEE in leggi statali in varie misure. Fare riferimento alle leggi del proprio Stato quando si dispone di un apparecchio elettrico o elettronico.

Per ulteriori dettagli fare riferimento alla direttiva WEEE sul riciclaggio del proprio Stato.

LINDY No. 43069

1st Edition Jan 2012

www.lindy.com

