

LINDY®

CONNECTION PERFECTION

USB Bluetooth 3.0 & WLAN Adapter LINDY No.52213

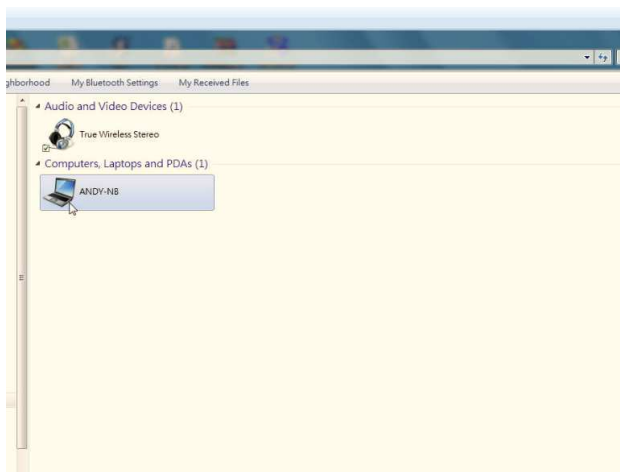
Quick Installation Guide

English

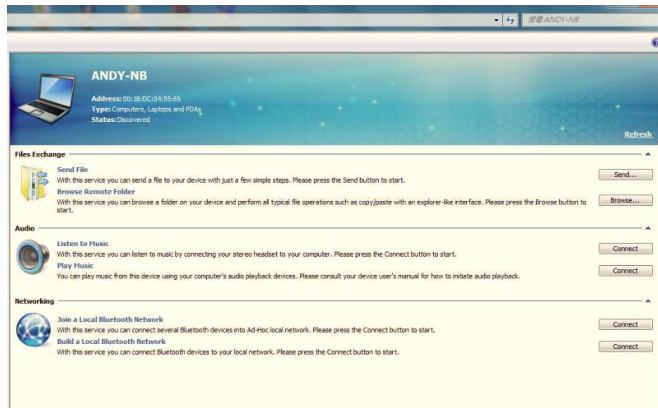
Thank you for purchasing the LINDY USB Bluetooth 3.0 & WLAN Adapter. This adapter combines the latest Bluetooth protocols and speeds with 11n WLAN functionality. Allowing high speed data transfer via both Bluetooth and WLAN in one easy to use and compact device.

Installation and Operation

1. Plug the adapter into an available USB port on your Laptop or PC
2. Install the Motorola BT Stack and Realtek software from the provided CD
3. Follow the on screen instructions and click next till the installation is complete. Then click finish to restart your computer
NOTE: Some Windows 7 machines will not allow the CD to autorun. In this instance, select "show CD content" then double click "VSetup.exe" to start the installation process
4. The software has three profiles that support high speed transfer:
 - OPP: Object Push Profile
 - FTP: File Transfer Protocol
 - PAN: Personal Area Networking Profile
5. Using the adapter to connect two Bluetooth devices:
 - Using the OPP profile: One device called SEAN-THINK and one device named ANDY-NB
 - Search the Bluetooth device for ANDY-NB



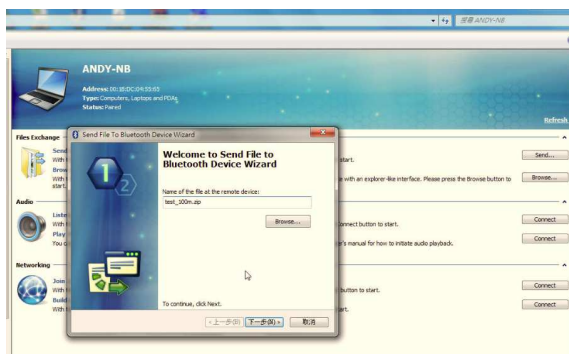
- Check what profile ANDY-NB supports



- Press “send” to send a file to ANDY-NB (OPP)



- Select the file you would like to send and press next



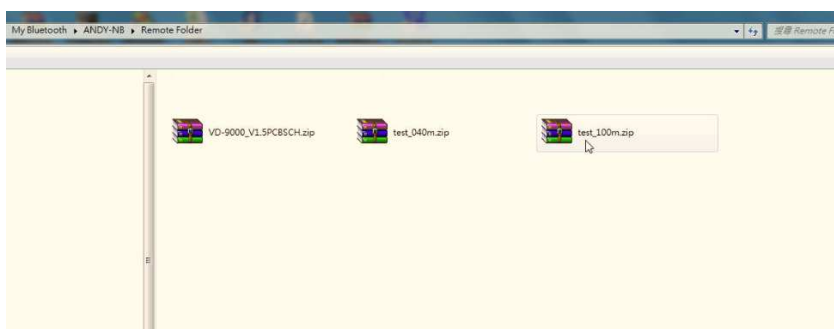
- Press “OK” to finish pairing with ANDY-NB and the file will then transfer via Bluetooth



- Using the FTP profile: One device called SEAN-THINK and one device named ANDY-NB
- In the software, select browse to choose the file you would like to transfer



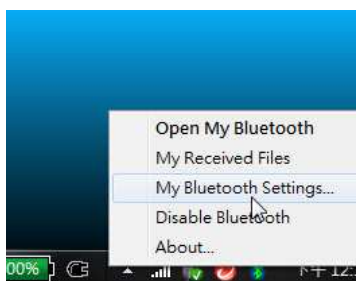
- Select a file from the remote folder



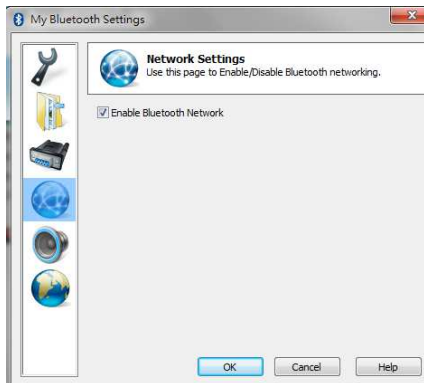
- Choose a folder where you would like to store the transferred file, click Ok and the transfer will begin



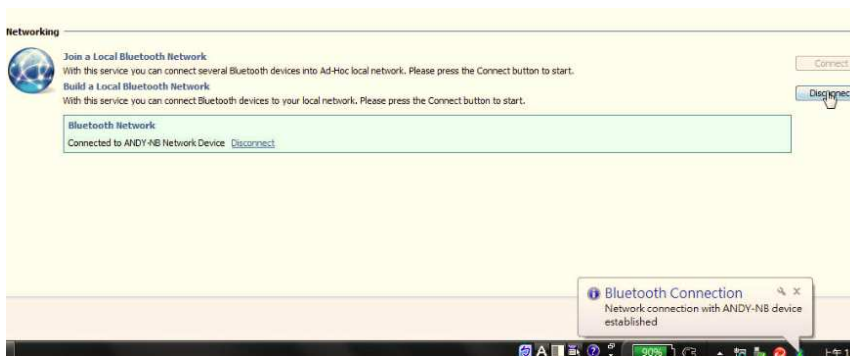
- Using the PAN profile: One device called SEAN-THINK and one device named ANDY-NB
- Right click on the Bluetooth icon on your taskbar and choose "My Bluetooth Settings"



- Select “Enable Bluetooth Network” and click “OK”



- Connect to the “Andy-NB Network Device”



- You can now enter the ANDY-NB shared folder via the network and copy files from the shared folder or remotely play media



WEEE (Waste of Electrical and Electronic Equipment), Recycling of Products

In 2006 the European Union introduced regulations (WEEE) for the collection and recycling of all waste electrical and electronic equipment. It is no longer allowable to simply throw away electrical and electronic equipment. Instead, these products must enter the recycling process. Each individual EU member state has implemented the WEEE regulations into national law in slightly different ways. Please follow your national law when you want to dispose of any electrical or electronic products. More details can be obtained from your national WEEE recycling agency.



LINDY No. 52213

1st Edition November 2011