

# LINDY®

## COMPUTER CONNECTION TECHNOLOGY Ethernet Powerline Adaptor

Quick Setup Guide

English



CE

FC For Home and Office Use  
Tested to Comply with  
FCC Standards

LINDY No. 25145

[www.LINDY.com](http://www.LINDY.com)

© LINDY ELECTRONICS LIMITED & LINDY-ELEKTRONIK GMBH - FIRST EDITION (FEB 2009)



## Content

Introduction.....	2
1. Key Features .....	2
2. Packet Contents .....	3
3. Hardware Connection – Computer .....	3
4. Hardware Connection – Internet.....	4
5. Management Utility Installation.....	5
Important Safety Instructions.....	7

## Introduction

Congratulations on your purchase of this outstanding Ethernet Powerline Adaptor. This device is a 200Mbps Powerline Ethernet Adaptor which transforms your house's existing electrical wiring into an ubiquitous networking infrastructure. Simply plug this 200Mbps Ethernet Powerline Adaptor into an ordinary AC power outlet which will easily extend your Cable/xDSL broadband connection or existing Ethernet (LAN) network to any other electrical outlet in any room of a house without the need of any new cabling.

This Ethernet Powerline Adaptor supports up to 200Mbps data rate over the existing household power circuit. With data rates of 200Mbps, full multimedia application can easily be supported throughout the whole house in addition to Internet access. This Ethernet Powerline Adaptor uses the existing power lines installed in a home as a path to transmit digital data, voice, audio and video between devices.

To ensure data communication's security and multimedia applications, this Ethernet Powerline Adaptor support built-in 128-bit AES encryption and Quality of Service (QoS) features. With minimum setup, you can install and use this Ethernet Powerline Adaptor within minutes. The adaptor add two new function to be useful

1. Existing connection with a new Unassociated device added via the Pair button.
2. Reset to default setting via the Reset button.

## 1. Key Features

### ➤ Homeplug AV

- High speed data transfer rate up to 200Mbps
- HomePlug AV standard compliant
- Works with AC input of 100V ~ 240V
- Plug-and-Play (PnP) configuration
- High-speed Powerline adapter with Ethernet interface
- Low power consumption
- OFDM techniques for high data reliability in noisy media conditions
- Intelligent channel adaptation maximizes throughput under harsh channel conditions
- Build-in QoS and Error Correction feature
- 128-bit AES Link Encryption with key management for secure power-line communications
- Transmission range up to 200m over household power supply grid
- Support Push Buttons "Pair" and "Reset" on the case
- RoHS (Lead-Free) compliant

## ➤ System Requirement

- At least two AC 100V ~ 240V power outlets with standard home power wiring
- A computer with the following:
  - Operating System with TCP/IP installed
  - Pentium III compatible processor and above
  - Ethernet LAN card installed with TCP/IP protocol
  - 64 MB RAM or more
  - 50 MB of free disk space (Minimum)
  - CD-ROM Drive

## 2. Packet Contents

The 200Mbps Ethernet Powerline Adaptor package contains the following items:

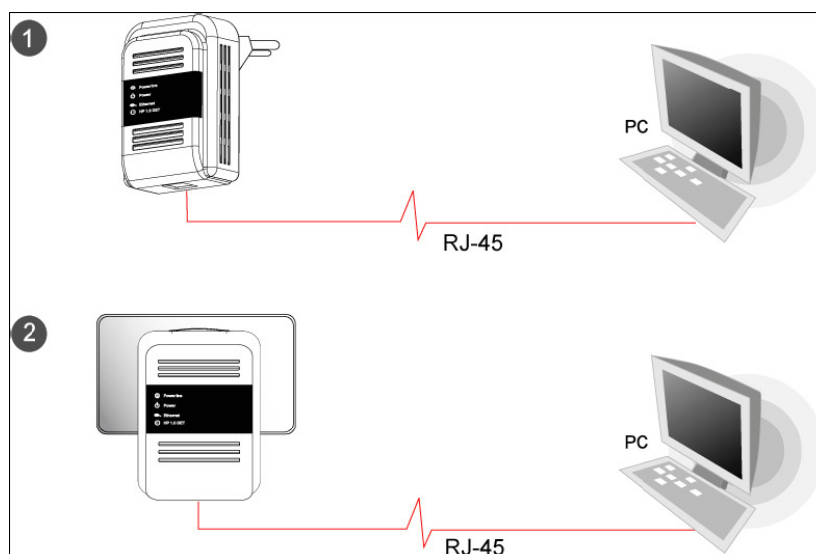
- One Ethernet Powerline Adaptor or Two for Twin pack
- One CAT-5 Ethernet (LAN) Cable or Two for Twin pack
- One Quick Start Guide
- One CD-ROM (Utility / Manual / Quick Setup Guide/Acrobat Reader)

If any of the above items are damaged or missing, please contact your dealer immediately.

## 3. Hardware Connection – Computer

Following are the steps to properly connect the Ethernet Powerline Adaptor to your computer:

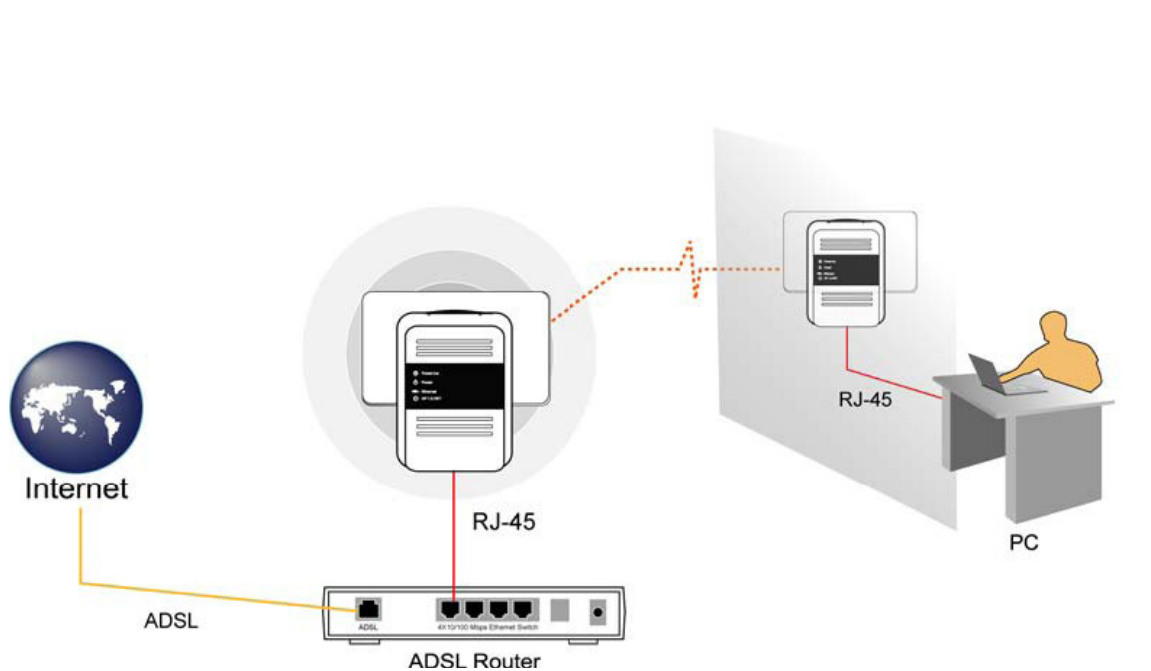
1. Power off your PC or Notebook.
2. Connect the provided Ethernet (RJ-45) cable to the Ethernet Powerline Adaptor's Ethernet port.
3. Connect the other end of the Ethernet (RJ-45) cable to you computer's LAN port.
4. Plug the Ethernet Powerline Adaptor into a wall socket next to the computer.
5. Turn on your computer.
6. Check and confirm that the Power and Ethernet LEDs on the Ethernet Powerline Adaptor are ON.



## 4. Hardware Connection – Internet

Follow the procedures describe below to connect the Ethernet Powerline Adaptor to your ADSL broadband connection:

1. Power off your PC or Notebook.
2. Connect the provided Ethernet (RJ-45) cable to the Ethernet Powerline Adaptor's Ethernet port.
3. Connect the other end of the Ethernet (RJ-45) cable to an available Ethernet port of your ADSL broadband Router.
4. Plug the Ethernet Powerline Adaptor into a wall socket next to the computer.
5. Turn on your computer.
6. Check and confirm that the Power, Powerline and Ethernet LEDs on the Ethernet Powerline Adaptor are ON.

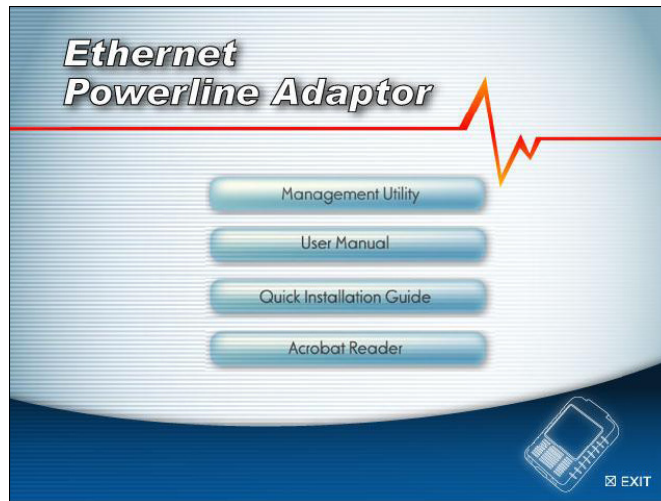


**Remark:** Do not connect the Powerline Adaptor to a extention lead, power strip, extension cord, or surge protector as this may degrade the network performance.

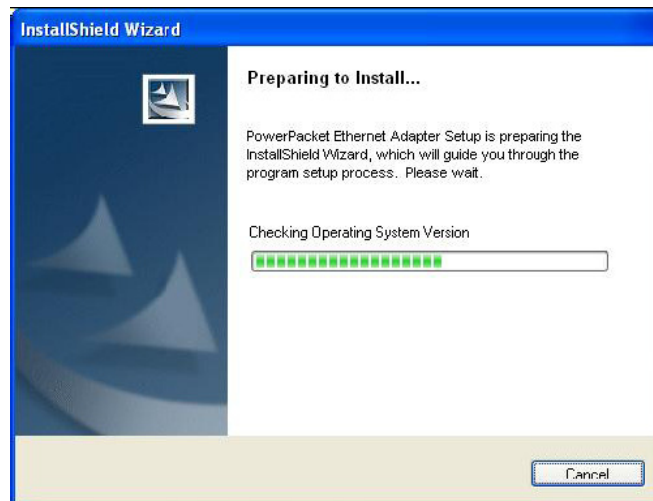
## 5. Management Utility Installation

Follow the procedures listed below to properly install the provided Management Utility:

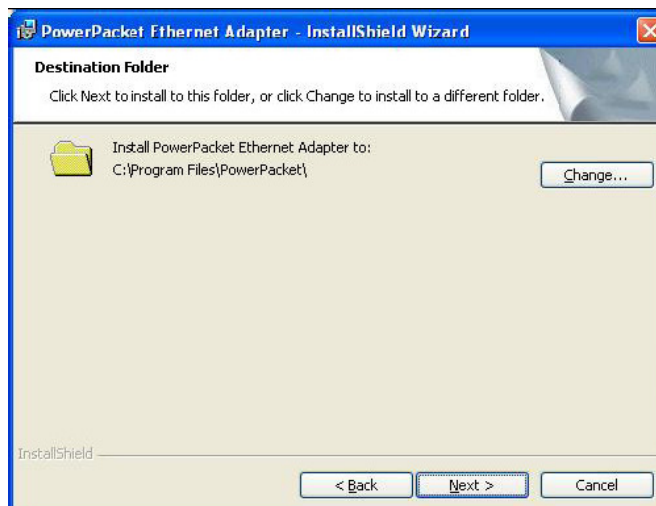
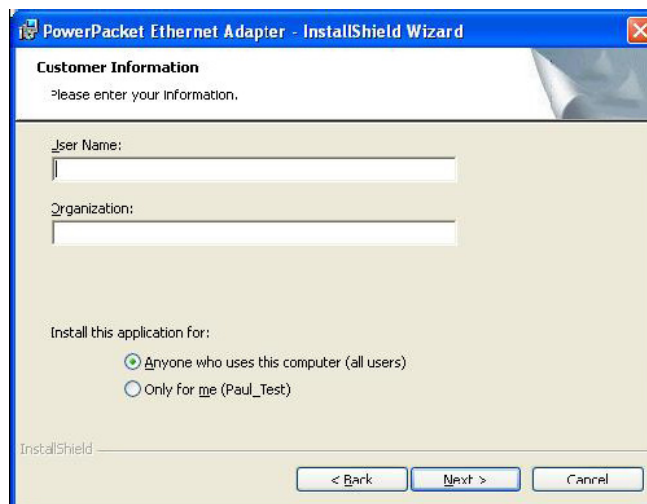
**Step 1:** Power on your computer and insert the provided CD into the CD-ROM drive, the following screen will pop-up automatically. Click on “Management Utility” to install the Management Utility.



**Step 2:** The program installation process will carry out and copy all the necessary files to your system.



Follow the instructions shown on the screen!





**Step 3:** After the installation, a shortcut to the “**PowerPacket Utility**” application icon appears on the Windows desktop.



## Important Safety Instructions

1. Do Not open this product or attempt to service this product, it may expose you to dangerous high voltage and other risks.
2. Do Not operate this product near water.
3. Do Not place or operate near or over radiator or heat register.
4. Do Not expose this product to dampness, dust or corrosive liquids.
5. Do Not connect this product and Disconnect from wall socket during a lightning or thunderstorm
6. Do Not obstruct this product ventilation slots, as insufficient airflow may harm this product.
7. Do Not put anything on this product.
8. Plug directly into wall socket (100Vac~240Vac). Do not use an extension cord between this product and the AC power source.
9. When plugging this product into wall socket, make sure that electrical socket are not damaged, and no leakage for gas or water pipes to begin with.
10. Place the connecting cables carefully so people won't stumble or walk on it.
11. The Powerline Adaptor should be operated from the type of power indicated on the marking label. If you are not sure of the type of power available, consult the qualified technician.
12. Unplug the Powerline Adaptor from the mains and refer the product to qualified service personnel for the following conditions:
  - a. If liquids has been spilled on the product
  - b. If the product has been exposed to rain or water
13. Unplug from the wall socket before cleaning. Use a damp cloth for cleaning. Do not use liquid cleaners or aerosol cleaners

This symbol on the product or in the instructions means that your electrical and electronic equipment should be disposed at the end of its life separately from your household waste. There are separate collection systems for recycling in the EU

For more information, please contact the local authority or your retailer where you purchased the product.

# **Radio Frequency Energy, Certifications**

**Shielded cables must be used with this equipment to maintain compliance with radio frequency energy emission regulations and ensure a suitably high level of immunity to electromagnetic disturbances.**

## **FCC Warning**

This equipment has been tested and found to comply with the limits for a Class B Digital device, pursuant to part 15 of the FCC Rules. These limits are designed to provide reasonable protection against harmful interference in a residential installation. This equipment generates, uses, and can radiate radio frequency energy and, if not installed and used in accordance with the instructions, may cause harmful interference to radio communications. However, there is no guarantee that interference will not occur in a particular installation. If this equipment does cause harmful interference to radio or television reception, which can be determined by turning the equipment off and on, the user is encouraged to try to correct the interference by one or more of the following measures:

- Reorient or relocate the receiving antenna
- Increase the separation between the equipment and receiver
- Connect the equipment into an outlet on a circuit different from that to which the receiver is connected
- Consult the dealer or an experienced technician for help

You are cautioned that changes or modifications not expressly approved by the party responsible for compliance could void your authority to operate the equipment.

This device complies with part 15 of the FCC Rules.

Operation is subject to the following two conditions:

1. This device may not cause harmful interference, and
2. This device must accept any interference received, including interference that may cause undesired operation

